

Farragut Presbyterian Church



January 19, 2025 9:00 a.m.

This service is being recorded by video and audio means.

*We invite you to stand as able.

~We Gather~

Greeting

Rev. Matt Nieman

Prelude

I'm So Blessed
Music Ensemble

CCLI Song # 7167000 Jonathan Smith | Logan Cain | Madison Cain | Matthew West | Taylor Cain
© All Essential Music; Be Essential Songs; Cashagamble Jet Music; Logan Cain Music; Madison Cain Music; Taylor Cain Music; Combustion Five; Third Story House Music CCLI License # 21071291

Call To Worship

God of the feast, God of abundance,
you are always turning water into fine wine.
Though the wine has run out,
you work miracles among us.
Though the work feels impossible,
you accomplish wonders through us.
Though many fail to perceive it,
you reveal your glory among us.
Help us to receive your good gifts this day,
that we might learn to put our faith in you. Amen.

*Opening Song

Way Maker

VERSE 1

$\text{♩} = 68$

A E Bsus

You are here, mov - ing in our midst; I wor - ship You, I wor - ship You.

4 C#m A E Bsus

You are here, work - ing in this place; I wor - ship You, I wor - ship You.

8 **CHORUS**

1 2 A

C#m C#m

You are here, You are Way Mak - er, Mir - a - cle Work - er,

11 E Bsus C#m

Prom - ise Keep - er, Light in the dark - ness, my God, that is who You are. You are

Verse 2
 You are here touching ev'ry heart
 I worship You I worship You
 You are here healing ev'ry heart
 I worship You I worship You

Verse 3
 You are here turning lives around
 I worship You I worship You
 You are here mending ev'ry heart
 I worship You yeah I worship You Lord

BRIDGE

A E

E - ven when I don't see it, You're work - ing. E - ven when I don't feel it, You're work - ing.

42 Bsus C#m

You nev - er stop, You nev - er stop work - ing. You nev - er stop, You nev - er stop work - ing.

*Opening Hymn

Great is Thy Faithfulness

VERSE

♩ = 75 C C+ Fmaj7 G7 F/C C F

1. Great is Thy faith - ful - ness, O God my Fa - ther, there is no
 2. Sum - mer and win - ter, and spring - time and har - vest; Sun, moon and
 3. Par - don for sin and a peace that en - dur - eth, Thy own dear

6 C/E C D/A A7 D7 G G7 C G7/C

shad - ow of turn - ing with Thee; Thou chang - est not, Thy com -
 stars in their cours - es a - bove join with all na - ture in
 pres - ence to cheer and to guide; Strength for to - day and bright

11 C Dm C/E Fmaj7 F#°7 C/G G7 C

pas - sions they fail not; As Thou hast been, Thou for - ev - er wilt be.
 man - i - fold wit - ness to Thy great faith - ful - ness, mer - cy and love.
 hope for to - mor - row, bless - ings all mine, with ten thou - sand be - side!

CHORUS

G F/C C A7 Gm/D Dm G7 C Cm6

Great is Thy faith - ful - ness! Great is Thy faith - ful - ness! Morn - ing by morn - ing new

23 G/D D7 G G7 C G7/C C Dm C/E Fmaj7 F#°7

mer - cies I see; All I have need - ed Thy hand hath pro - vid - ed - Great is Thy

30 C/G G7 C

faith - ful - ness, Lord, un - to me.

CCLI Song # 18723 Thomas Obediah Chisholm | William Marion Runyan © Words: Public Domain; Music: Public Domain CCLI License # 21071291

*Prayer of Confession

Rev. Matt Nieman

Almighty God, we confess that we have been led astray by the idols of our world. We have depended on our possessions and have not placed our trust in your grace. We have carelessly consumed the gifts you offer and have failed to be faithful stewards of the earth's resources. We have sought security in the might of the sword rather than the strength of your Holy Spirit. Forgive us, we pray. Lead us to true repentance that we may serve you faithfully.

(please continue in silent prayer)

*Declaration of Forgiveness

*The Peace

The Peace of Christ be with you.
And also with you.

~We Proclaim~

Prayer for Illumination

John Begovich

Gracious God, by the power of the Holy Spirit, quicken our understanding that we may receive the testimony of Scripture and believe in the signs that reveal your presence. We pray in Jesus' name. Amen.

Scripture Readings: Isaiah 62:1-5
John 2:1-11

[Pew Bible pg. 692]

[Pew Bible pg. 93]

The Gospel of the Lord.

Praise to you, O Christ.

Sermon

“The Best Stuff”

Rev. Matt Nieman

~We Respond~

Affirmation of Faith – *from the Confession of '67*

We believe that Jesus Christ has set the pattern for the Church's mission. His life as one of us involves the Church in the common life of humanity. His service commits the Church to work for every form of human welfare. His suffering makes the Church sensitive to all suffering so that it sees the face of Christ in the faces of the poor, sick, and oppressed. His crucifixion discloses to the Church God's judgement on our inhumanity and the awful consequences of our own complicity in injustice. The Church follows this pattern in its life and in the method of its action. So to live and serve is to confess Christ as Lord.

Musical Reflection

Our God
Music Ensemble

CCLI Song # 5677416 Chris Tomlin | Jesse Reeves | Jonas Myrin | Matt Redman
© 2010 Atlas Mountain Songs; Rising Springs Music; Thankyou Music; Vamos Publishing; worshiptogether.com songs CCLI License # 21071291

Call for Giving

Prayers of Thanksgiving and Intercession

The Lord's Prayer

**Our Father, who art in heaven, hallowed be thy name.
Thy kingdom come, thy will be done, on earth as it is in heaven.
Give us this day our daily bread; and forgive us our debts, as we forgive our debtors; and lead us not into temptation, but deliver us from evil.
For thine is the kingdom, and the power, and the glory, forever.
Amen.**

~We Go Out Into the World~

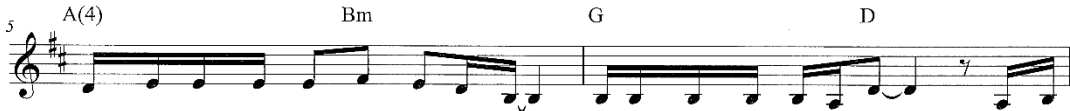
*Closing Song

I'm So Blessed

VERSE 1



1. Trou - ble knock - ing at my door to - day. I ain't gon - na let it in.



Wor - ry wan - na steal my joy a - way. I ain't gon - na let it win. On my

PRE-CHORUS



best day I'm a child of God. On my worst day I'm a child of God. Oh,

CHORUS



ev - 'ry - day is a good day. You're the rea - son why. I'm so blessed, I'm so blessed, got this



heart - beat in my chest. No, it docs - n't mat - ter a - bout the rest. If I got

VERSE 2



You, Lord, I'm so blessed. When I count the prob - lems that I see,



hope looks all but gone. But when I count the ways You're good to me, You got me



count - ing all day long.

CCLI Song # 7167000 Jonathan Smith | Logan Cain | Madison Cain | Matthew West | Taylor Cain

© All Essential Music; Be Essential Songs; Cashagamble Jet Music; Logan Cain Music; Madison Cain Music; Taylor Cain Music; Combustion Five; Third Story House Music CCLI License # 21071291

*Charge and Benediction

Annual Congregational Meeting Next Sunday

The annual meeting of the congregation will take place following both worship services next Sunday. At the meeting, we will review 2024, present the 2025 church budget, and approve changes to Pastor Matt's terms of call.

Today's music ensemble:

Sandra Bohlken, piano & vocals ~ Joey Nieman, guitar & vocals ~ Charles Needham, bass guitar
Kevin Zetina, percussion
Mindy Houlihan and Shannon Needham, vocals

Ushers ~ Eiffert Family

A/V Team ~ Ken Ladrach, David Long, Mason Warren, Parker Morrell,
Turner Neely, & Kat Wilson

Please use one of the methods below to record your attendance with us today:



Scan this QR code and click on the generated google doc link, or

- Go to <https://tinyurl.com/record-FPC-attendance>, or
- Email the office at office@fpctn.org, or
- Sign the pew attendance pad.



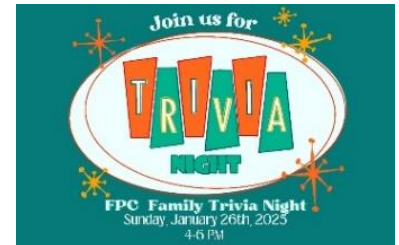
TODAY WE CELEBRATE DAWN'S RETIREMENT

At a reception between services today, we celebrate Dawn Zilles, our exceptional and delightful Office Administrator, who retired at the end of December. We thank Dawn for her years of service with FPC and wish her the happiest retirement!

FAMILY TRIVIA NIGHT AND SOUP POTLUCK is back!

Please join Family Ministries on Sunday, January 26, at 4:00 pm in Fellowship Hall. There will be trivia questions for ALL ages! Bring soup, bread, salad or another food item to share in the potluck.

Please RSVP with the QR code.



STARTING TODAY! HELP STOCK THE FOOD PANTRY

Please join the Presbyterian Women, during this season of high unemployment, as we help stock the food pantry at Sunset Gap. In October, the pantry served 565 families, 2542 people, and in November (only open 3 weeks) they served 520 families, 2340 people.



Items most needed include flour, sugar, cornmeal mix, cooking oil, peanut butter, pasta and canned pasta sauce, canned meat, rice, mac & cheese, breakfast items, Ramen noodles and crackers.

The drive will be January 19- February 9. Items can be placed in the basket in the narthex. If you have questions, contact Debbie Long.

MIAMI UNIVERSITY OF OHIO MEN'S GLEE CLUB is offering a free concert at FPC as part of their winter tour. Come enjoy this talented group of 40 young singers this Monday, January 20 at 6:00pm in our Sanctuary.



Join Family Ministries for a VALENTINE'S BRUNCH on February 9 at 10am in the Fellowship Hall. We will have a secret valentine gift exchange, photo booth, and yummy food! We will also be making valentine's cards to add to our February snack bags for the clients of Volunteer Ministry Center. Please sign up with the QR code:



SANTA ELVES INC is grateful for the incredible support of FPC in making Christmas a little brighter for the 70 kids and young adults we were able to help this year. On December 20, 2024, we hosted a party for the 60 kids in residence at Holston Homes for children. We had a catered dinner, took massive amounts of Polaroids, passed out small gifts (with PJs, soft blankets, snacks, and hygiene products), and spent time enjoying each other's company to celebrate the upcoming holiday. On Christmas morning, the kids all opened their wish list boxes stuffed full of the items each child wished for. The kids and adults all had a great time at the party and we hope that their Christmas experience showed them that their community sees and loves them. It is always our hope that any small thing we do will encourage the kids to dig in and complete their programs. In addition, your support also made it possible for us to provide wish list gifts for 10 at-risk kids living with relatives in the community.



Thank you again for your love and support. We would be nothing without generosity like yours.



Christmas Party at Holston Homes



Santa Elves Inc. Board of Directors

PRAYERS FOR OUR CHURCH FAMILY:

Kathy Emmerson, Marilyn Felts, Chuck Foriska, Frank Guess, Dixie Heflin, Beth and Jimmy Loyless, Brenda Luggie, Ann McAnally, Irma McGuffey, Maria Medina, Tami Newsom, Lewis Ransdell

This Week at FPC

Sun, Jan 19	9am Casual Worship Service ~ 11am Traditional Worship Service		
Mon, Jan 20	9:00	a.m.	KidZone/Fellowship Hall
	5:30	p.m.	SMYG Movie Night/FH
	7:00	p.m.	Village Green HOA/Room A
	*****	*****	OFFICE CLOSED
	11:00	a.m.	Room D Reserved
Tues, Jan 21	5:00	p.m.	Church Life Committee/Library
	6:00	p.m.	Miami University Concert/Sanctuary, Room A
	10:30	a.m.	Feed the Hungry/VMC
Wed, Jan 22	12:00	p.m.	Big Fish Chapel/Sanctuary
	6:00	p.m.	Admin/Library
	7:00	p.m.	Boy Scouts #444/FH, Room A, Narthex
	12:00	p.m.	Big Fish Chapel/Sanctuary
	12:00	p.m.	Room D/Parlor Reserved
	1:00	p.m.	PW Bible Study/Library
	2:00	p.m.	Staff Meeting/Library
Thurs, Jan 23	6:00	p.m.	Casual Worship Music Rehearsal/Room A
	6:00	p.m.	Handbell Rehearsal/Sanctuary
	7:30	p.m.	Chancel Choir/Room A
	8:00	a.m.	Men's Bible Study/Narthex
	9:00	a.m.	Property Committee/Library
	12:00	p.m.	Pastors Lunch/Library
	12:30	p.m.	Neighborhood Book Club/Room A
Fri, Jan 24	6:30	p.m.	Cub Scouts/Fellowship Hall
	10:00	a.m.	Chair Yoga/Narthex
	7:00	p.m.	Gentle Yoga Class/Narthex

Sunday School ~ 10:00 a.m.

- **KidZone** is for children ages 3-9 who meet in Fellowship Hall at 9am to learn about the love of God, through Bible verses, songs, videos and fun activities.
- **Adult Bible Study** meets in Room D to discuss the weekly Lectionary text. Everyone is welcome. Contact Elizabeth Wilson with questions.
- **Pastor Matt's Class** is studying a book titled "Hope: A User's Guide," by MaryAnn McKibben Dana. Join us in the library at 10:00
- **FPC Youth Class** meets at 10am in the Café (parlor) each week during the school year to "Dive In" to the Old Testament. Contact Mason Warren for more information.



Farragut Presbyterian Church

209 Jamestowne Blvd. ~ Farragut, TN 37934
865/966-9547 ~ www.fpctn.org

Church Office Hours:

Monday - Thursday 9am-3pm; Friday 9am-1pm

*"To praise God, welcome all, serve others,
grow in faith, be disciples of Jesus Christ and share the Good News."*



<http://tinyurl.com/FPCe-giving>